

NIZZA LINEAR

PMMA LED cooler linear lighting fixture



Via Leonardo da Vinci, 24/A Corsico (MI), 20094 - Tel. 02 95 327 303



Features

The co-extruded PMMA lighting fixture is designed for shelf and refrigeration display lighting. Food display versions are available. Different configurations available upon request.

Specifications / data per meter

Electrical

| | |
|---------------|--------------|
| Power | 9.6W |
| Input voltage | 12V / 24V DC |
| Consumption | 9.6W (Max) |

LED

| | |
|------|-------------|
| Type | 2835 |
| QTY | 140 pcs |
| CCT | 2700K-6500K |
| CRI | >80 Ra |

Light Output

| | |
|------------|------------|
| Beam angle | 120° |
| Efficiency | 80-90 Lm/W |
| Lumen | 820 Lm |

Food Display Versions

| | |
|--------------------|------------|
| Meat: | CCT-Pink |
| Fish: | CCT-10000K |
| Vegetable & Fruit: | CRI>97 Ra |

Working Temperature

-25°C / -35°C ~ +45°C

IP Rating

IP54

Appearance

| | |
|------------|----------------------|
| Material | PMMA |
| Dimensions | L1022 x W11 x H12 mm |
| Max Length | 3122 mm |
| Diffuser | Milky |

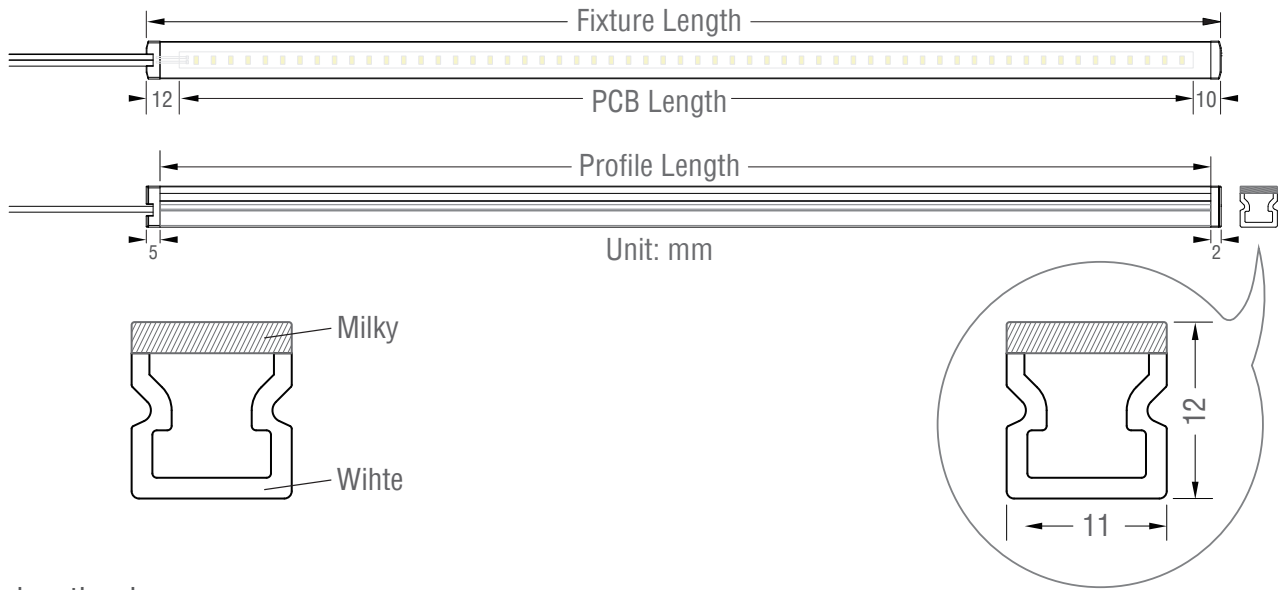
Accessories

Spring steel clips / Magnet clips / Magnetic tape

Wire exit

Linear + 90° x 3 ways out

Mechanical Structure



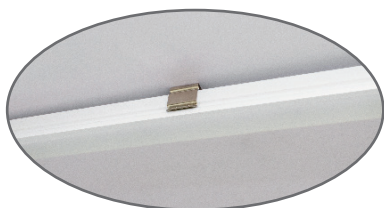
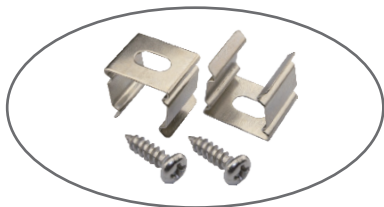
• Light fixture length rules

| Fixture Length (mm) | Profile Length (mm) | PCB Length (mm) |
|---------------------|---------------------|-----------------|
| 122 | 116 | 100 |
| 172 | 166 | 150 |
| 222 | 216 | 200 |
| 272 | 266 | 250 |
| 322 | 316 | 300 |
| 372 | 366 | 350 |
| 422 | 416 | 400 |
| 472 | 466 | 450 |
| 522 | 516 | 500 |
| 572 | 566 | 550 |
| 622 | 616 | 600 |
| 672 | 666 | 650 |
| 722 | 716 | 700 |

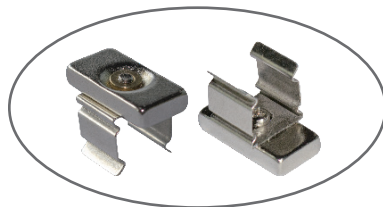
| Fixture Length (mm) | Profile Length (mm) | PCB Length (mm) |
|---------------------|---------------------|-----------------|
| 778 | 772 | 750 |
| 828 | 822 | 800 |
| 878 | 872 | 850 |
| 928 | 922 | 900 |
| 978 | 972 | 950 |
| 1022 | 1016 | 1000 |
| 1522 | 1516 | 1500 |
| ... | | |
| 2022 | 2016 | 2000 |
| ... | | |
| 2522 | 2516 | 2500 |
| ... | | |
| 3122 | 3116 | 3100 |

Installation

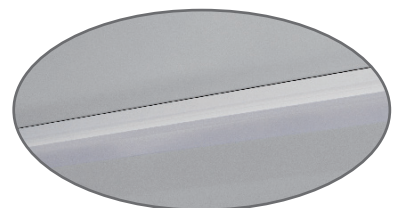
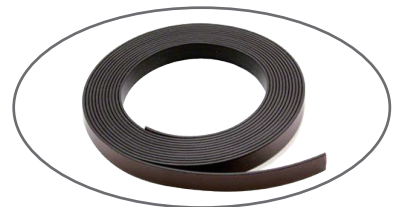
• Mounting



Clip with screws

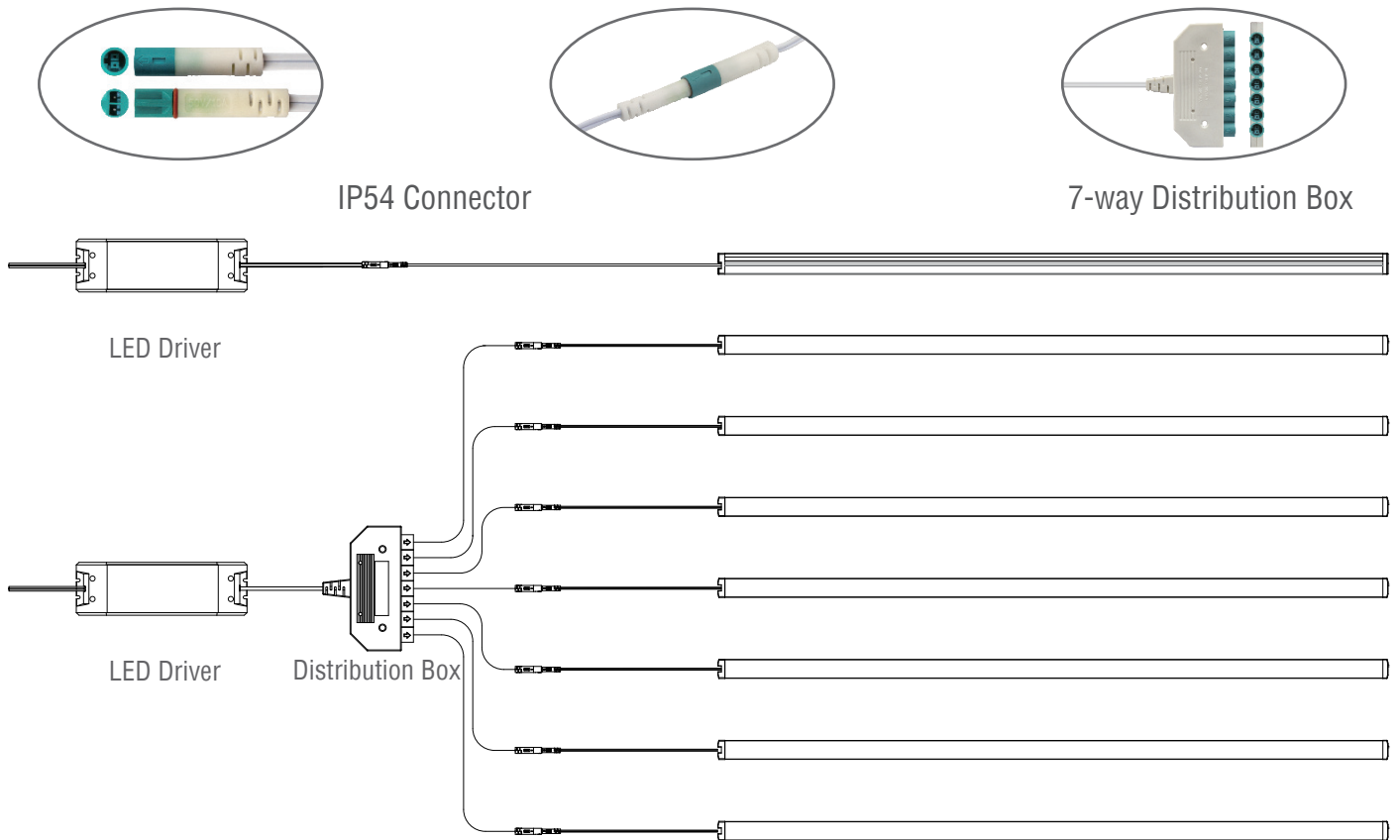


Clip with magnet



Magnetic strip

Connection Diagram



Applications

