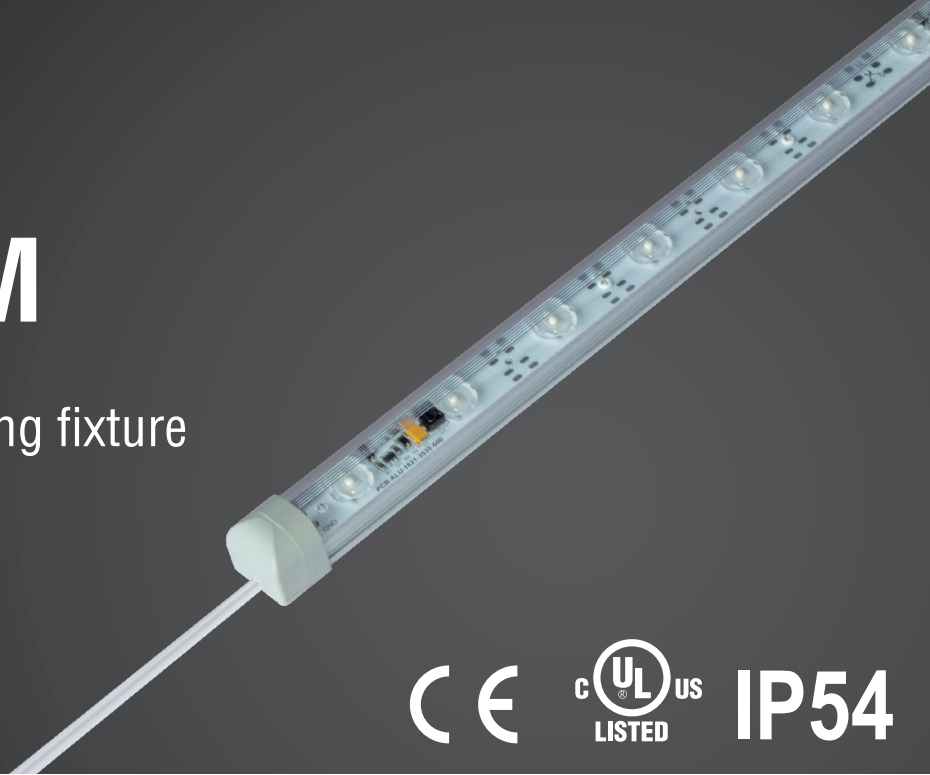


MILANO SLIM

Aluminium LED cooler lighting fixture



Via Leonardo da Vinci, 24/A Corsico (MI), 20094
Tel. 02 95 327 303



Features

Milano Slim is dedicated to wall type vertical freezers & chillers.

The special lens design creates an even light distribution up to 50cm to both sides.

Meat display versions are available.

Different configurations available upon request.

Specifications / data per meter

Electrical

Power	20W
Input voltage	12V / 24V DC
Consumption	20W (Max)

LED

Type	3535
QTY	19 pcs
CCT	3000K-6500K
CRI	>80 Ra

Light Output

Beam angle	175°
Efficiency	73 Lm/W
Lumen	1450 Lm

Food Display Versions

Meat:	CCT-Pink
Fish:	CCT-10000K
Vegetable & Fruit:	CRI>97 Ra

Working Temperature

-25°C / -35°C ~ +45°C

IP Rating

IP54

Appearance

Material	Anodized aluminium, PMMA
Dimensions	L1042 x W27.8 x H22.8 mm
Max Length	2542 mm
Diffuser	Clear

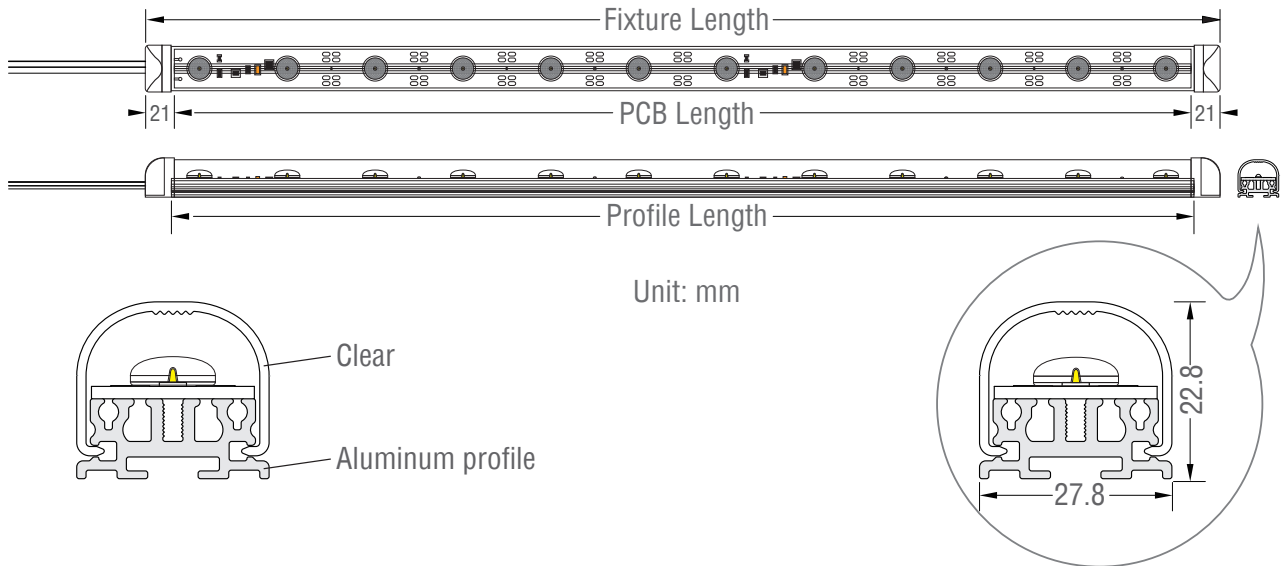
Accessories

Screws / Magnets

Wire Exit

Linear

Mechanical Structure



• Light fixture length rules

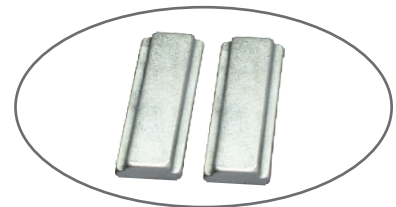
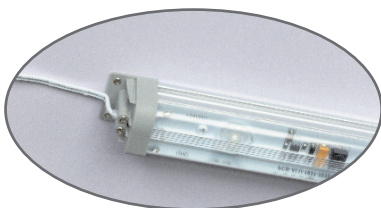
Fixture Length (mm)	Profile Length (mm)	PCB Length (mm)
342	310	300
642	610	600
942	910	900
1242	1210	1200
1542	1510	1500
1842	1810	1800
2142	2110	2100
2442	2410	2400

Installation

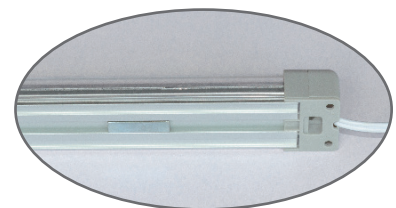
• Mounting



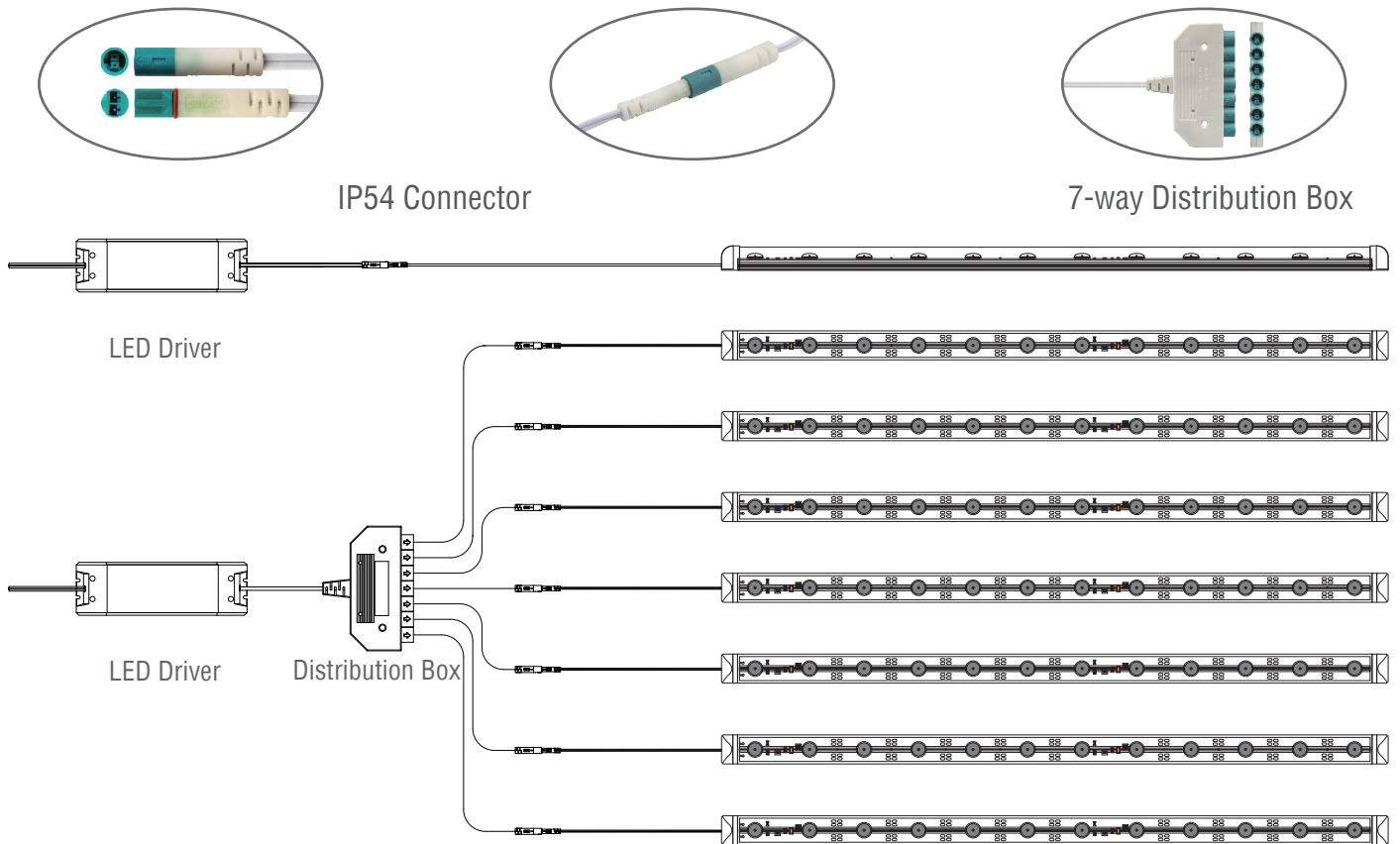
Screws



Magnets



Connection Diagram



Applications

